



Rainbow Pool Products

PO Box 2388, Mansfield Qld 4122

Telephone STD 61-7-3849 5385

Facsimile STD 61-7-3849 5384

Email: info@rainbowpoolproducts.com.au

Web: www.rainbowpoolproducts.com.au



Tech Update 01_2010 Servicing the New ProX2

Table of Contents

Introducing the New ProX2	<u>3</u>
New Side Panel and Outer Casing	<u>4</u>
New Double Bearing for Driving System	<u>5</u>
New Digital "Switch-Mode" Power Supply	<u>6</u>
New Remote Control Unit	<u>7</u>
Notes	<u>7</u>
Filter bag systems	<u>8</u>
Servicing the New and Old Models	<u>9</u>
Service part numbers for New ProX2	<u>10</u>

Introducing the ProX2

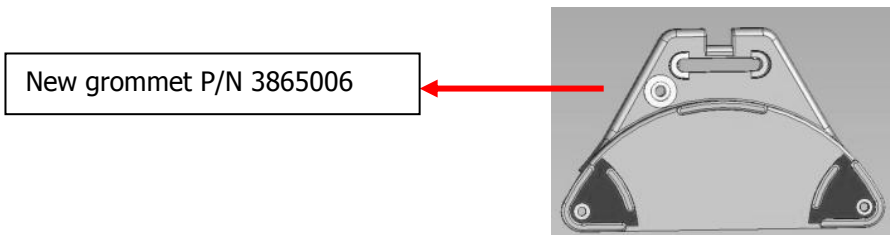
New Dolphin ProX2 offers new features and improved design:

- New side panel and outer casing
- New bearing for driving system and DIY replacement brushes
- New gyro system for motor unit to improve movement
- New material for motor unit boxes
- New PCB cards for motor units (software and hardware)
- New digital "switch-mode" power supply
- New remote control unit
- Color change to match Wave color scheme and create a new family of Dolphins for commercial pools

New Side Panel and Outer Casing

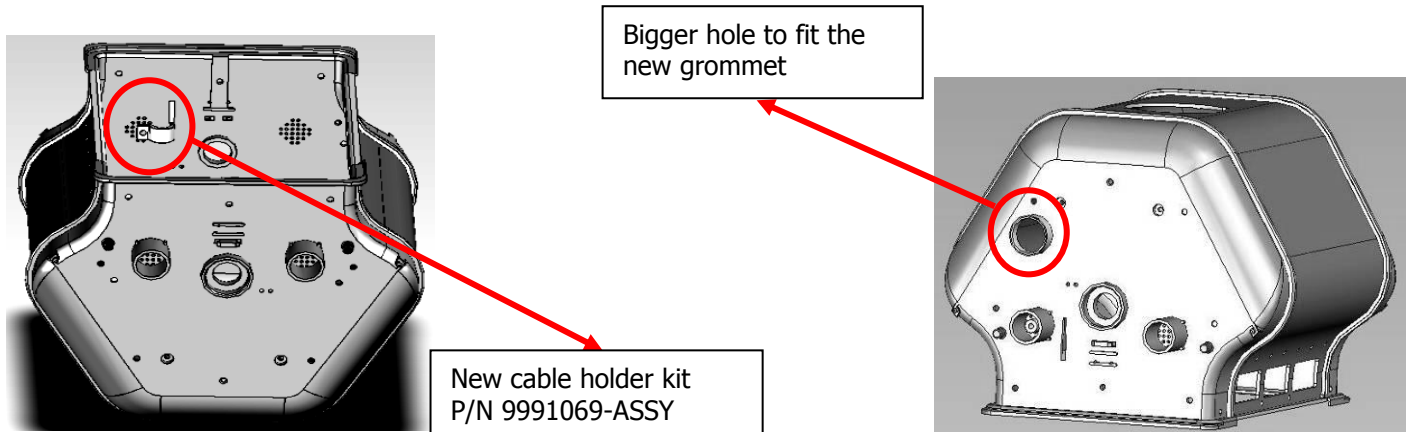
Side Panel

As part of our quality improvement policy, we have introduced a new side panel which includes a grommet (see illustration) to avoid cable ruptures at the cable entry point and a new design which allows easy replacement of the brushes.



Outer Casing

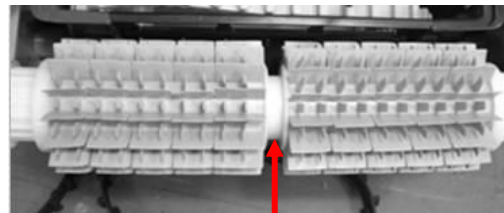
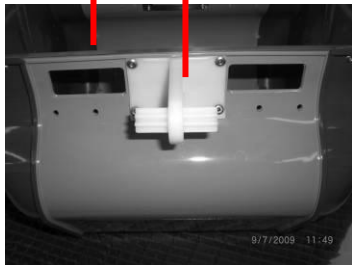
The outer casing has been changed to ensure a better fit with the new side panel (see illustration below).



New Double Bearing System

The new double bearing system will be placed between both brushes, allowing the driving system to work independently without additional support for the outer casing. As a result, the new Prox2 outer casing will not have a stainless steel bar across the body and will look similar to the Diagnostic casing (see illustration).

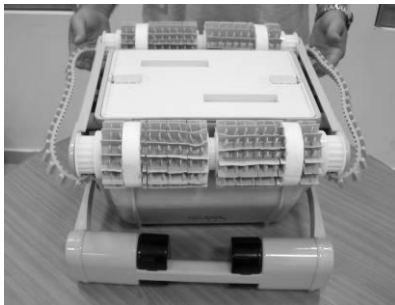
Without body support and metal bar



New bearing P/N 3884078

Dismounting and Mounting the new DIY wheels system

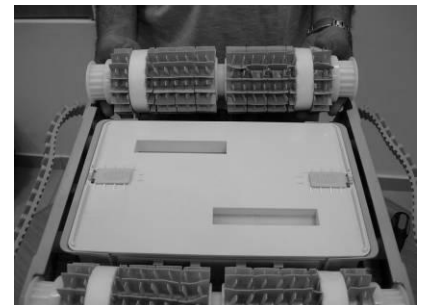
To dismantle the wheels, follow the pictures step by step:



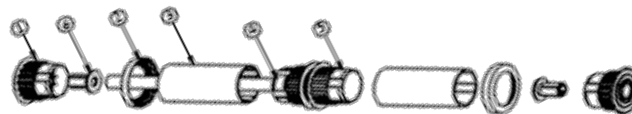
1. Remove the tracks



2. Unscrew the SS shaft



3. Remove the wheels



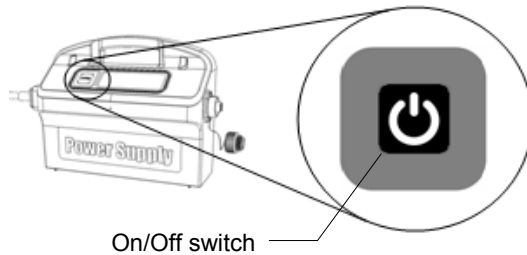
wheel tube ASSY P/N - 99955955-ASSY

New Digital Switch-Mode Power Supply

The new digital switch-mode power supply (PS) replaces the old PS models (yellow, LF, and RD).

Digital "Switch-Mode" Power Supply

- 100–250 AC Volts
- 50–60 Hertz
- 180 Watts
- Output 29 DC volts
- IP 54



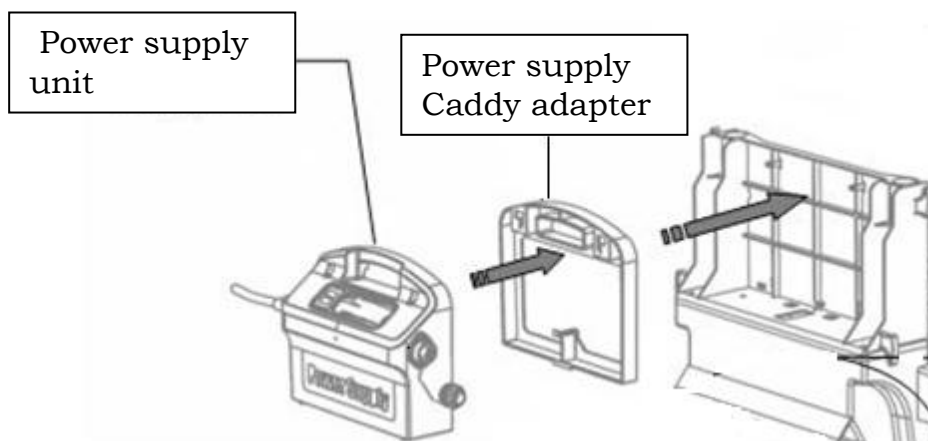
The following spare parts available for after sales service:

- PCB indicator
- Cable switching (fast connection to the PS)
- Amphenol socket connection:
 - 3379212 — SCREW KA30X12
 - 9995894 — MARK 2 P.S DIAG WIRING ASSY
 - 5020012 — AMPH. SOCKET COVER FOR P.S.



All part numbers are listed in the Electronic price list.

To enable the attachment of the new PS to the Caddy, we have included an adapter in the spare parts box (see the diagram below).



New Remote Control Unit



The new user friendly remote control unit (RCU) only operates with the new electronic power supply. The RCU comes with a neck string for attachment to the Caddy. The new RCU will only be included with other models once the old RCU stock has run out. The RCU is supplied with a Caddy adapter (P/N 9980763).

Notes

RCU and Power Supply

- The new RCU and new PS also operate with the old and new motor units (RCU and PS are supplied together).
- The new RCU cannot operate with the old PS.
- The old RCU cannot operate with the new PS.

Outer casing and side panel

- You must order the new outer casing to service the new models.
- The part number of the new outer casings remains the same.
- The new side panel does not fit the old outer casing.
- The old side panel does not fit the new outer casing.
- You must keep both types of side panels in stock.
 - The old bearings do not fit the new body – new bearings must be installed on the new body.
 - You may only use the new outer casings for the old ProX once the old stock has run out.

Filter Bag Systems

- The fine filter bag is now the default bag for this model.
- The ultrafine filter bag will be provided as a spare filter bag.
- The coarse filter bag will only be available as a spare part.

Servicing New and Old Models

Outer Casing

- a. If an old outer casing needs to be replaced, the new outer casing should be installed with the new bearing system instead of the two original bearings.
- b. If an old driving system needs to be replaced, the regular TT system can be used.

Side Panel and Outer Casing

- a. When an old side panel needs to be replaced, replace it with the same old side panel.
- b. When an old outer casing needs to be replaced, use a new outer casing, new side panel with grommet, and new bearing system.

RCU

- a. The defective PS can only be replaced by a new electronic PS under warranty, (including the RCU) when the old PS cannot be repaired and there is no replacement stock available. once you have sent Maytronics the old defective PS and the old RCU (as per RMA procedure), you may order both these parts free of charge.
- b. We will continue to keep stock of the old RCU and the respective spare parts for aftersales service.

New Double Bearing System

- a. The regular bearings are still in use for all models.
- b. The upgrade kits for the TT driving system are still available as spare parts.

Part numbers for New ProX2 Parts

Description	Part number
Outer casing	99951803
Impeller tube black	9995071
Side panel	9981084
Side panel with grommet	9995041
Cable holder kit	9991069-ASSY
Wheel tube ASSY	99955957-ASSY
Bearing	3884078
Stainless steel shaft for ProX2 wheel ASSY	5581014
Handle ASSY	9995723
Electronic RCU	99954226-ASSY
Cable for digital PS	5898411LF
Digital switch mode power supply	9995671-ASSY
Grommet for side panel	3865006
Caddy adaptor for power supply	9980038
RCU holder for caddy	9980763